



融汇全球专业洗衣 为您创造卓越

TEXTILE CARE SOLUTIONS
THAT WORK FOR YOU

Milnor Series Washer-Extractors



深圳中施机械设备有限公司
Castic-SMP Machinery Corp.,Ltd.

 深圳中施机械设备有限公司
Castic-SMP Machinery Corp.,Ltd.

地址A:深圳观澜美泰科技园1号厂房
Building1,Meitai Industry Zone,Guanlan Town,Shenzhen,China
电话T:+86-755-26639452 传真F:+86-755-26632860
电邮E:sales@castic-smp.com.cn 售后服务专线S:400-6816-128

www.castic-smp.com



扫一扫 关注我们



Product

F Series Open Pocket Washer-Extractor

Milnor suspended washer-extractors are designed for fast production and excellent wash quality. With 300G extraction rates and a choice of controls and tilt options, these machines are an excellent choice for high-production laundries.



▲ Model 48040F7Z



▲ Model MWF100J

MWF Series Washer-Extractor

Milnor MWF series remain all the advantages of Milnor X series suspended washer-extractor, with less space required. Advanced suspension system makes machine operation more steady. Touch screen control for ease and flexibility in washing. These machines are ready to become high-performance solutions in your facility.

» Features

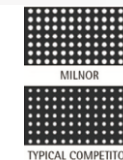
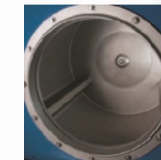


• Advanced suspension cushions vibration system

Rubber springs are used to isolate vibration and deliver smooth operation and performance. Plus, they resist corrosion and are virtually maintenance free.

• Excellent cylinder design

The drum design has a wider range of small holes, resulting in better washing quality, faster, better, and more thorough bleaching, washing, and drying effects.



• Inverter driving system is simple and efficient

The inverter driving system provides all different speeds to help prevent load imbalance, and is also designed with programmable speeds for maximum control. The high-speed dehydration function is also suitable for cotton clothes, while the low-speed function can be used for synthetic fabrics. The energy-efficient drive also reduces electric peak load demand.



• Versatile Microprocessor Controls

E-P Plus® and MilTouch™ controllers provide pre-programmed and field programmed formulas. Both have informative displays and formula counters to aid supervision.



• Rin Save® System

The unique "water evenly distributed" function can reduce up to 2 times of cleaning, saving up to 3.3 liters of water per kilogram of cloth, saving water, energy, and costs.

• Built for Durability

Tough frame designed through computer analysis-disperses stress evenly for long life.



• Automatic Supply Injection

Prevent direct contact between soap liquid raw materials and linen and stainless steel, and extend the service life of linen; Soap dispenser (standard with 6-10 compartment automatic feeding, optional with 5 compartment manual feeding).

• Design that is considerate of operators

Big 30" door openings are at convenient heights that serve to reduce operator fatigue and help increase productivity.





» Other Advanced Features

- *Choice of capacities.

*One-single-speed motor with inverter.

*Tilting options are available for some models.(Above 63kg)
- *High fixed-rate extracts of 300Gs in all models.

*Self-diagnostics, formula counter.

* Optional weighing system.

» Technical Parameter

	UNIT	MWF18	MWF27	MWF36	MWF45	MWF63	MWF77	MWF100	MWF125	48040
Max Capacity+	Kg	18	27	36	45	63	77	100	125	125
Cylinder Volume	L	180	255	348	433	590	727	952	1186	1186
Cylinder Diameter	Mm	700	762	914	914	1067	1067	1219	1219	1219
Cylinder Depth	Mm	468	560	533	660	660	813	816	1016	1016
Wash Speed++	Rpm	38-43	38-43	38-43	38-43	36-40	36-40	30-38	30-38	30-38
Distribution++	Rpm	70	68	65	65	60	60	66	66	66
Extract Speed++	Rpm	876	840	766	766	710	710	664	664	664
Width+++	mm	825	1150	1255	1255	1465	1465	1780	1780	2116
Depth+++	mm	1169	1500	1583	1710	1818	1970	2023	2311	2508
Height+++	mm	1426	1780	1880	1880	2080	2080	2305	2345	2445
Approx. Net Weight	kg	680	880	1625	1700	2300	2450	2900	3900	4050
Motor	KW	3.7	3.7	7.5	7.5	11	11	15	18.5	18.5
Electric Heated Power	KW	18	18	36	36	36	36	45	45	
Compressed Air Fittings	inch	1/4"	1/4"	1/4"	1/4"	1/4"	1/4"	1/4"	1/4"	1/4"
Cold water inlet	inch	1/2"	3/4"	3/4"	3/4"	1-1/4"	1-1/4"	1-1/2"	1-1/2"	1-1/2"
Hot water inlet	inch	1/2"	3/4"	3/4"	3/4"	1-1/4"	1-1/4"	1-1/2"	1-1/2"	1-1/2"
Soap inlet	inch	1/2"				3/4"	3/4"			
Third inlet	inch	1"	1"	1"	1"	1"	1"	1-1/2"	1-1/2"	1-1/2"
Drain valve(Drain to rear)	inch	3"	3"	3.5"	3.5"	3.5"	3.5"	4"	4"	4.5"
Drain valve (Double Drain to rear)	inch	2*3"	2*3"	2*3"	2*3"	2*3"	2*3"	2*4"	2*4"	2*4.5"
Drain valve (Drain to center)	inch				3.5"	3.5"	3.5"	4.5"	4.5"	4.5"
Drain valve (Double Drain to center)	inch						2×3"	2×4.5"	2×4.5"	2×4.5"
Drain valve (Drain to center for tilt models)	inch					4.5"	4.5"	4.5"	4.5"	4.5"
Steam										
Inlet	inch	1/2"	1/2"	3/4"	3/4"	3/4"	3/4"	1-1/4"	1-1/4"	1-1/4"

Optional E-P Plus controller or MilTouch™ controller.
Specifcations and appearance subject to change without notice.
Please contact factory for acoustics data.

Product

MWT Series Washer-Extractor

Milnor commercial laundry equipment, range in capacity from12-27KG, offering savings and flexibility without compromising the wash quality you expect from Milnor. Customers with large bundles are attracted by the speed, convenience, economy and versatility of Milnor equipment. These machines deliver lower operating costs and higher profit for you.



▲ Model MWT27J5

Self-Service Washer-Extractors



▲ Model MCT18E4 (Coin-Operated)



▲ Model MCT18M4 (Wechat-Operated)



Coin-Operated

- Card reader compatible and dual-coin acceptor is also available.

The microprocessor control delivers seven wash formulas, each with programmable prices.

Rugged vault deters theft.



» Features

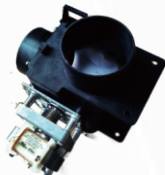
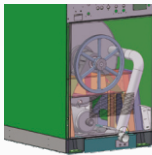


• Inverter Drive Motor

The setting of the inverter can directly provide various rotational speeds required during the washing process, without the need for complex variable speed systems, and the vibration during high-speed dehydration can be minimized through the setting of the inverter.

• Suds Overflow Protection Keeps Floor Dry

An overflow pipe (at rear) helps keep floor dry, reduces danger of slipping.



• Gravity Drain Won't Clog

There's no troublesome pump. A simple gravity valve drains quickly, avoids clogging.

• Washing Quickly

TripleLoader handles the work of three standard top loaders in fast cycle times. Washing cylinder volume is much greater than that of other machines in the same class which enables the machines to handle large family bundles and bulky items such as washable drapes, blankets, spreads, sleeping bags and shag rugs.

• Oversized Doors Load Quickly

Doors are large in diameter. No pushing or tugging to get loads in or out.

• Proven Single-Motor Inverter Drive

Deliver a wash speed (reversing), load distribution speed (to minimize vibration during high-speed extraction) and final extraction.

• Superior Washing Quality

Reversing washing action with no tangling or knotting. The same lift-and-drop action that has won Milnor its reputation for superior washing quality among commercial laundry operators.

• Low Water Usage

Low water usage means savings on fuel and taxes. Milnor's wash formulas use dual rinses to conserve water which uses less than 1.5 gals/lbs of clothes washed in a typical formula.

» Technical Parameter

	UNIT	MWT12J5	MWT16J5	MWT18J4	MWT18J6	MWT27J5	MWR36J4
Capacity	lbs.(kg)	22-16 (10-12)	30-35 (14-16)	40-44 (18-20)	40-44 (18-20)	55-60 (25-27)	80 (36)
Cylinder Diameter*Depth	ins.(mm)	23*14 (584*356)	23*18 (584*449)	28*18 (711*457)	28*18 (711*457)	30*22 (762*560)	36*21 (915*533)
Gross Cylinder Volume	cu.ft(L)	3.4 (95)	4.3 (122)	6.4 (180)	6.4 (180)	9 (255)	12.4 (350)
Motor	hp(kw)	1.0 (0.8)	1.5 (1.1)	3 (2.2)	3 (2.2)	4 (3)	5.5 (4)
Wash Speed	rpm	43	43	39	39	38	34
Distribution Speed	rpm	90	90	72	72	65	63
Extract Speed	rpm	535	535	480	620	485	442
Extract G Forces		90	90	90	150	100	100
Drain Valve	ins.(mm)	2 (51)	2 (51)	3 (76)	3 (76)	3 (76)	3 (76)
Inlet Valve	ins.(mm)	0.75 (19.1)	0.75 (19.1)	0.75 (19.1)	0.75 (19.1)	0.75 (19.1)	0.75 (19.1)
Overall Width	ins.(mm)	29 (736)	29 (736)	34.45 (875)	34.45 (875)	34.45 (875)	40.29 (1023)
Overall Depth	ins.(mm)	36.31 (922)	42.13 (1070)	47.83 (1215)	47.83 (1215)	51.85 (1317)	52.13 (1324)
Overall Height	ins.(mm)	43.2 (1100)	43.2 (1100)	53.07 (1348)	53.07 (1348)	56.38 (1432)	60.81 (1545)
Approx. Net Weight	lbs.(kg)	540 (245)	564 (256)	838 (380)	970 (440)	1157 (525)	1235 (560)

	UNIT	MCT12E5	MCT16E5	MCT18E4	MCT27E5	MCR36E4
Capacity	lbs.(kg)	22-16 (10-12)	30-35 (14-16)	40-44 (18-20)	55-60 (25-27)	80 (36)
Cylinder Diameter*Depth	ins.(mm)	23*14 (584*356)	23*18 (584*449)	28*18 (711*457)	30*22 (762*560)	36*21 (915*533)
Gross Cylinder Volume	cu.ft(L)	3.4 (95)	4.3 (122)	6.4 (180)	9 (255)	12.4 (350)
Motor	hp(kw)	1.0 (0.8)	1.5 (1.1)	3 (2.2)	4 (3)	5.5 (4)
Wash Speed	rpm	43	43	39	38	34
Distribution Speed	rpm	90	90	72	65	63
Extract Speed	rpm	535	535	480	485	442
Extract G Forces		90	90	90	100	100
Drain Valve	ins.(mm)	2 (51)	2 (51)	3 (76)	3 (76)	3 (76)
Inlet Valve	ins.(mm)	0.75 (19.1)	0.75 (19.1)	0.75 (19.1)	0.75 (19.1)	0.75 (19.1)
Overall Width	ins.(mm)	29 (736)	29 (736)	34.45 (875)	34.45 (875)	40.29 (1023)
Overall Depth	ins.(mm)	36.31 (922)	42.13 (1070)	47.83 (1215)	51.85 (1317)	52.13 (1324)
Overall Height	ins.(mm)	43.2 (1100)	43.2 (1100)	53.07 (1348)	53.07 (1348)	60.81 (1545)
Approx. Net Weight	lbs.(kg)	540 (245)	564 (256)	838 (380)	1157 (525)	1235 (560)